



# BULLIVANTS Blue@Link

## WELD ON LIFTING POINT



### Working Load Limits (in tonnes) for symmetrical loading

ORDER CODE				
	SINGLE POINT	2, 3 OR 4 POINT		
		MAXIMUM INCLUDED ANGLE		
		60°	90°	120°
165451	2.0	3.4	2.8	2.0
164453	4.0	6.9	5.6	4.0
165452	6.7	11.6	9.5	6.7

**WARNING** - NEVER EXCEED THE WORKING LOAD LIMIT (WLL).

**MANUFACTURED IN AUSTRALIA USING  
ONLY HEAT CERTIFIED AUSTRALIAN STEEL.**

**Bullivants**  
HANDLING SAFETY

**1300 722 999**

**www.bullivants.com**

### FEATURES:

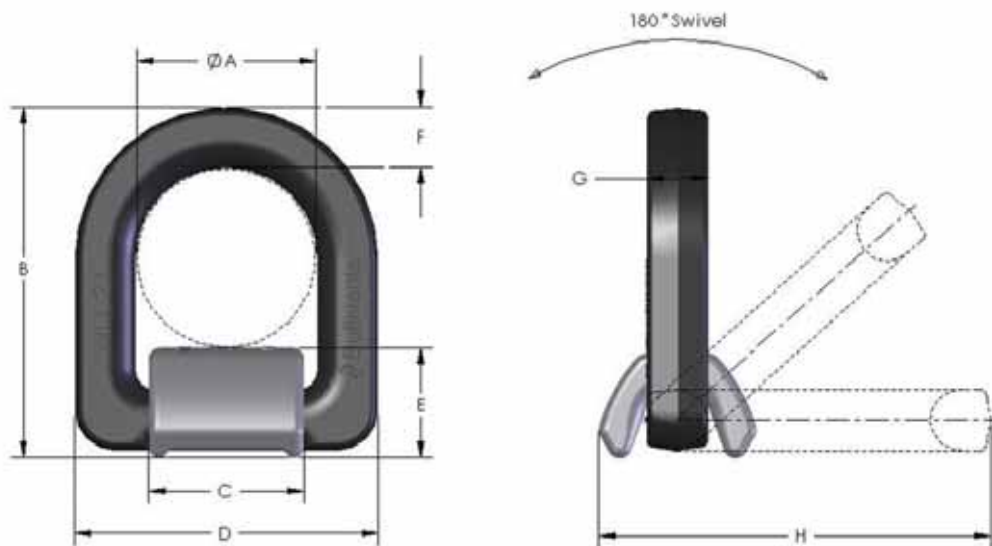
- Australian made
- Forged D-ring and housing in Grade 100 material
- Flat design
- Test load and magnaflux test loaded
- Multi directional loading
- Rated capacity can be increased 100% in specific lashing applications



# BULLIVANTS Blue@Link

## WELD ON LIFTING POINT

### DIMENSIONS



WLL (tonnes)	A	B	C	D	E	F	G	H	Net Weight
2	40	82	34	68	28	14	14	92	0.42kg
4	53	104	46	90	33	18	18	116	0.86kg
6.7	68	138	60	116	45	23	23	155	2kg



**Bullivants**  
HANDLING SAFETY

1300 722 999

[www.bullivants.com](http://www.bullivants.com)

### FEATURES:

- Australian made
- Forged D-ring and housing in Grade 100 material
- Flat design
- Test load and magnaflux test loaded
- Multi directional loading
- Rated capacity can be increased 100% in specific lashing applications

*Safely Lifting Australia*

